



Sony Ericsson

Working Instructions

- mechanical -



Xperia™ arc S
LT18i, LT18a



CONTENTS

1	Exterior Views.....	4
1.1	LT18i, LT18a	4
2	Tools	5
3	Disassembly.....	6
3.1	Cover Battery.....	6
3.2	Battery.....	6
3.3	Cover Rear	7
3.4	Camera.....	8
3.5	RCV Flex PBA Assy	9
3.6	Key Flex PBA.....	9
3.7	Cable RF	10
3.8	Main PBA	11
4	Replacement	13
4.1	Cover Battery.....	13
4.2	Cover Rear	13
4.3	Camera.....	13
4.4	RCV Flex PBA Assy	13
4.5	Key Flex PBA.....	14
4.6	Cable RF	14
4.7	Ant GPS Flex	15
4.8	Ant Main Flex.....	17
4.9	Audio Jack Receptacle 5p	19
4.10	Cap RF	21
4.11	Cover Front.....	22
4.12	Cover HDMI.....	23
4.13	Display 4.2 TFT.....	25
4.14	Ear Speaker	29
4.15	Foil Adhesive Sub PBA.....	31
4.16	Input Switch Push	33
4.17	Key Camera	34
4.18	Key Main	35
4.19	Key On/Off	36
4.20	Key Volume	37
4.21	Label Core Unit.....	38
4.22	MComp Sheet Hinge HDMI	40
4.23	MComp Sheet Protection LCD	42
4.24	MComp Sheet Sub PBA	43
4.25	MComp Sheet TP.....	45



4.26	Mcomp Sheet TP SIM	47
4.27	Net Receiver	48
4.28	Shield Can Lid BB-A	50
4.29	Shield Can Lid BB-B	51
4.30	Shield Can Lid RF	52
4.31	Sub PBA.....	53
4.32	Board Swap	55
4.32.1	Board Swap- Replacement	55
4.32.2	Board Swap – Change Label	55
4.32.3	Board Swap – Customize of Software	55
5	Reassembly.....	56
5.1	Main PBA	56
5.2	Cable RF	57
5.3	Key Flex PBA.....	58
5.4	RCV Flex PBA Assy	59
5.5	Camera.....	60
5.6	Cover Rear	61
5.7	Battery.....	62
5.8	Cover Battery.....	63
6	Country of Origin Barcodes for Brazil/VIVO Labels.....	64
7	Revision History	65

**For general information about mechanical repair related issues, refer to
1220-1333: Generic Repair Manual - mechanical**



1 Exterior Views

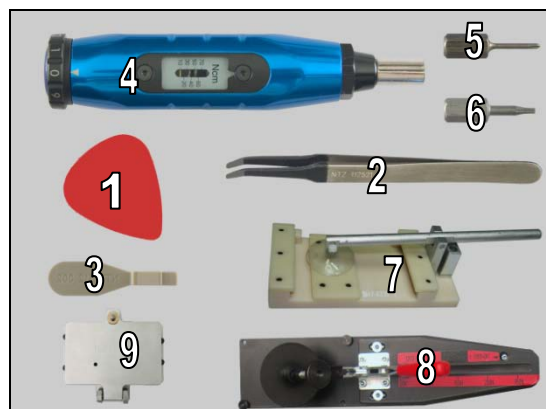
1.1 LT18i, LT18a



2 Tools

SPECIAL TOOLS

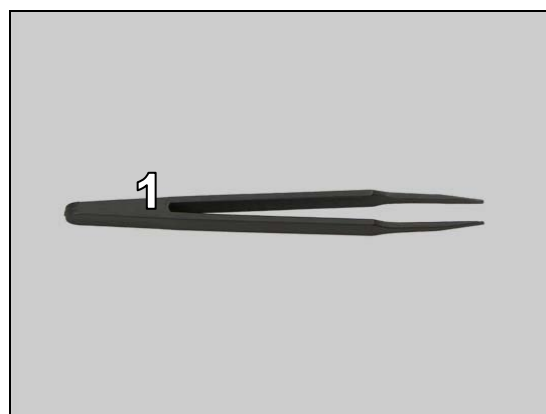
1. Guitar Pick
2. Flex Film Assembly Tool
3. Front Opening Tool
4. Torque Screwdriver
5. Bits(T6)
6. Bits(JCIS No 0)
7. TP/LCD remove tool
8. Pressure Tool
9. Pressure Fixture



For part no's on the tools above, refer to the 'Tools Catalogue/Matrix'!

STANDARD TOOLS

1. Tweezers





3 Disassembly

The disassembly is done in the following order:

1. Cover Battery
2. Battery
3. Cover Rear
4. Camera
5. RCV Flex PBA Assy
6. Key Flex PBA
7. Cable RF
8. Main PBA
9. Cover Front & Display 4.2 TFT



3.1 Cover Battery

Push upwards to unsnap the hooks of the Battery Cover from the bottom gently and remove it.



3.2 Battery

Use fingers to release the battery.



Lift to remove the Battery.



Disassembly

3.3 Cover Rear

Remove the two Screws Len:3.0 Diam:1.4 Mby Bits (JCIS No 0).



Remove the four Screws Len:4.5 Diam:1.7by T6.



Slide the Cover Rear from the left-bottom by using a Guitar Pick.

Keep the Guitar Pick downward direction as shown to make sure not to touch the edge of Rear Cover Assy



Slide the side back and forth.

Keep the Guitar Pick downward direction as shown to make sure not to touch the edge of Rear Cover Assy.



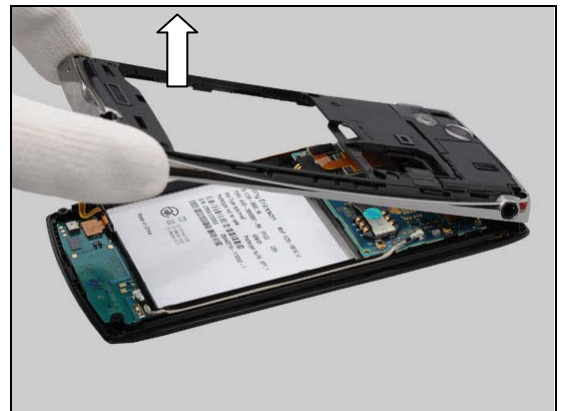
Disassembly

Do the same at the other side.

Keep the Guitar Pick downward direction as shown to make sure not to touch the edge of Rear Cover Assy.



Remove the Cover Rear gently.



3.4 Camera

Unsnap the BtB connector by using a Front Opening Tool.



Remove the Camera.





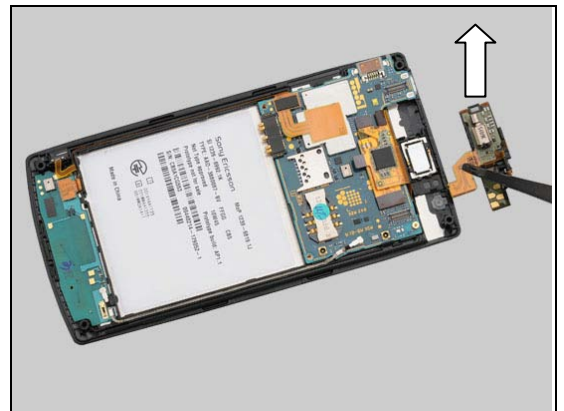
Disassembly

3.5 RCV Flex PBA Assy

Unsnap the BtB connector by using a Front Opening Tool.

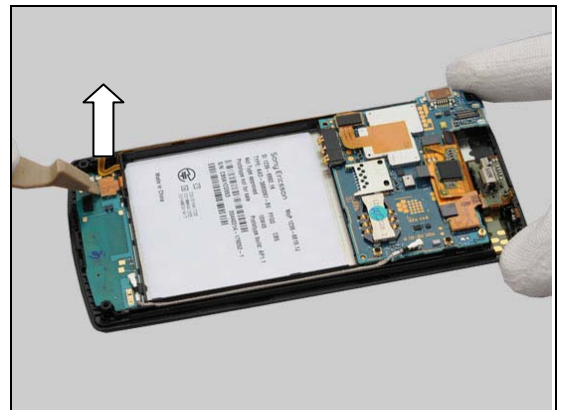


Remove the RCV Flex PBA Assy gently.



3.6 Key Flex PBA

Unsnap the BtB connector by using a Front Opening Tool.



Lift the Key Flex PBA gently.

Note the key dome be removed gently!



Disassembly

Unsnap the BtB connector by using a Front Opening Tool.



Remove the adhesive area gently.

Keep shape of the head of the adhesive area!
The underneath adhesive could be reused one more time!



3.7 Cable RF

Unsnap the connector by using a Front Opening Tool.

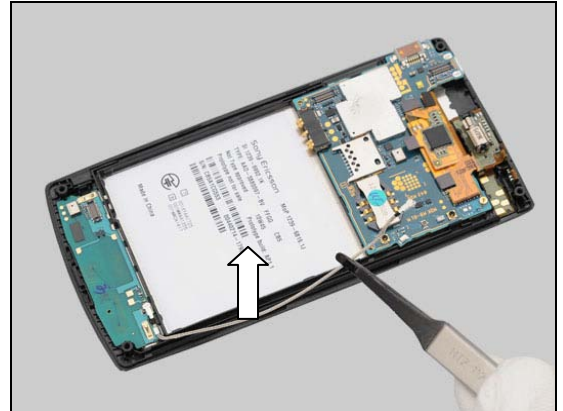


Unsnap the other connector.



Disassembly

Remove the Cable RF out of the groove.

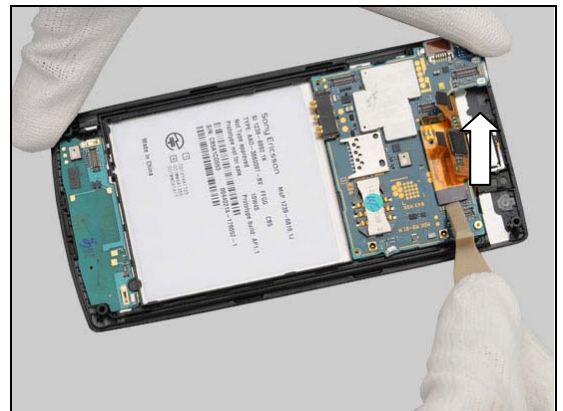


3.8 Main PBA

Unsnap the BtB connector by using a Front Opening Tool.



Unsnap the BtB connector by using a Front Opening Tool.



Insert the Front Opening Tool to release the Main PBA from the top gently.



Disassembly

Lift up and separate the Main PBA.



4 Replacement

4.1 Cover Battery

Follow the 3.1 Disassembly instructions!

Prepare a new Cover Battery.

Follow the 5.8 Reassembly instructions!



4.2 Cover Rear

Follow the 3.1 – 3.3 Disassembly instructions!

Follow the 4.7, 4.8, 4.9, 4.10, 4.12, 4.17, 4.19, 4.20, 4.22, 4.25 Removal instructions!

Prepare a new Cover Rear.

Follow the 4.7, 4.8, 4.9, 4.10, 4.12, 4.17, 4.19, 4.20, 4.22, 4.25 Installation instructions!

Follow the 5.6 – 5.8 Reassembly instructions!

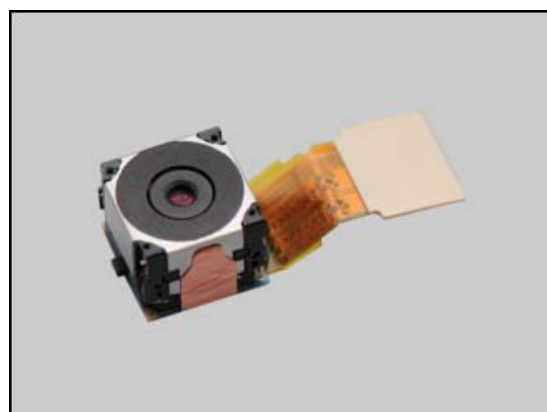


4.3 Camera

Follow the 3.1 – 3.4 Disassembly instructions!

Prepare a new Camera.

Follow the 5.5 – 5.8 Reassembly instructions!

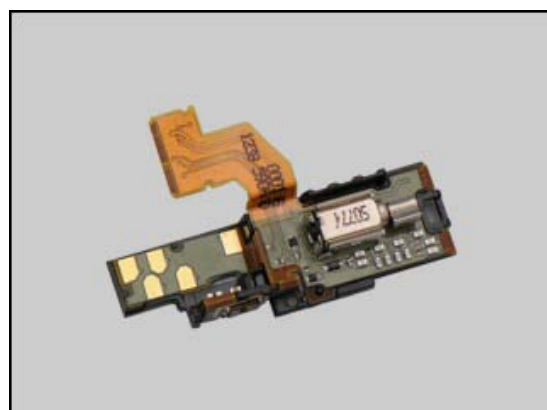


4.4 RCV Flex PBA Assy

Follow the 3.1 – 3.5 Disassembly instructions!

Prepare a new RCV Flex PBA Assy.

Follow the 5.4 – 5.8 Reassembly instructions!



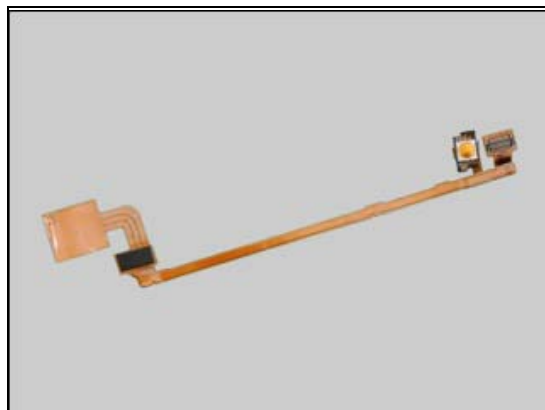
Replacement

4.5 Key Flex PBA

Follow the 3.1 – 3.6 Disassembly instructions!

Prepare a new Key Flex PBA.

Follow the 5.3 – 5.8 Reassembly instructions!



4.6 Cable RF

Follow the 3.1 – 3.7 Disassembly instructions!

Prepare a new Cable RF.

Follow the 5.2 – 5.8 Reassembly instructions!



Replacement

4.7 Ant GPS Flex

Follow the 3.1 – 3.3 Disassembly instructions!

Carry out the Removal as described below.

Prepare the new Ant GPS Flex.

Carry out the Installation as described below.

Follow the 5.6 – 5.8 Reassembly instructions!

REMOVAL

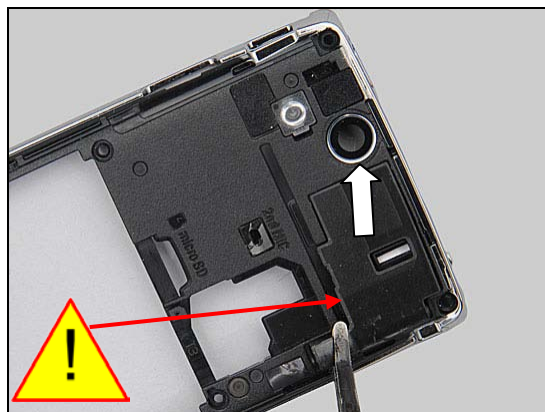
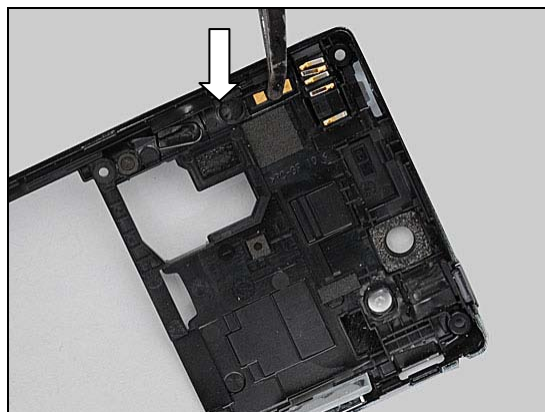
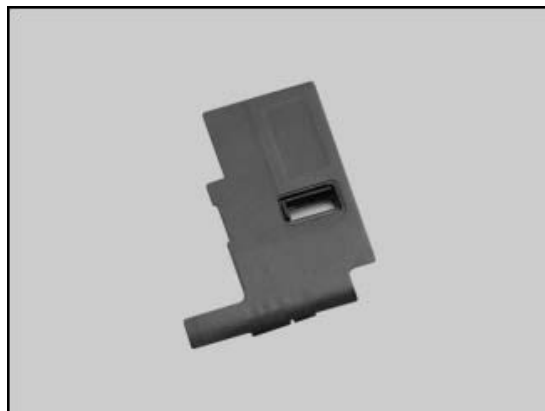
Push to release the hook by a flex film assembly tool.

Detach the Ant GPS Flex by the flex film assembly tool.

Scrap! Not to be reused!

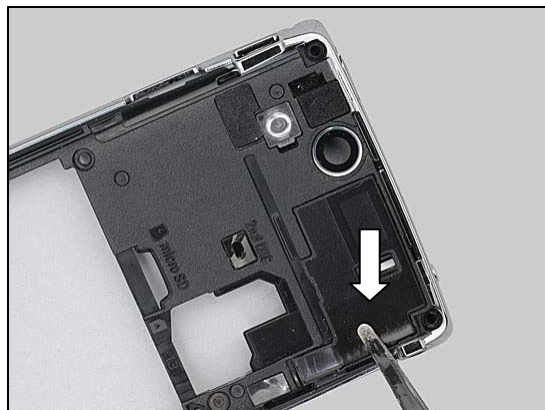
INSTALLATION

Hold the Ant GPS Flex and place it on the Cover Rear as shown in picture.

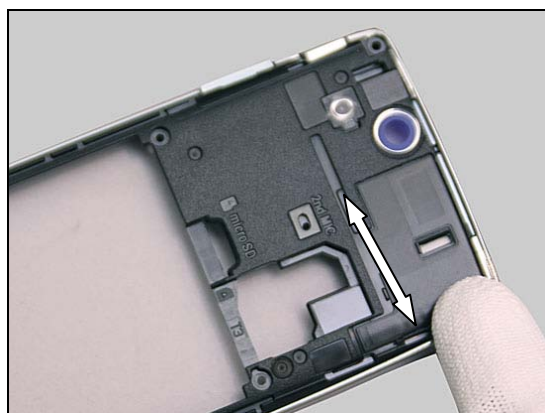


Replacement: Ant GPS Flex

Press to snap the hook.



Press along the surface to make the Ant GPS Flex securely attached.



Replacement

4.8 Ant Main Flex

Follow the 3.1 – 3.3 Disassembly instructions!
 Carry out the Removal as described below.
 Prepare the new Ant Main Flex.
 Carry out the Installation as described below.
Follow the 5.6 – 5.8 Reassembly instructions!

REMOVAL

Push to release the hook by Guitar Pick.

Remove the Ant Main Flex.

INSTALLATION

Install the Ant Main Flex in the alignment of the bottom of the Rear Cover as shown.



Replacement: Ant Main Flex

Press the Ant Main Flex into its proper position.

Do not touch the contact pins on the Loud speaker!





Replacement

4.9 Audio Jack Receptacle 5p

Follow the 3.1 – 3.3 Disassembly instructions!
Carry out the Removal as described below.
Prepare the new Audio Jack Receptacle 5p.
Carry out the Installation as described below.
Follow the 5.6 – 5.8 Reassembly instructions!

REMOVAL

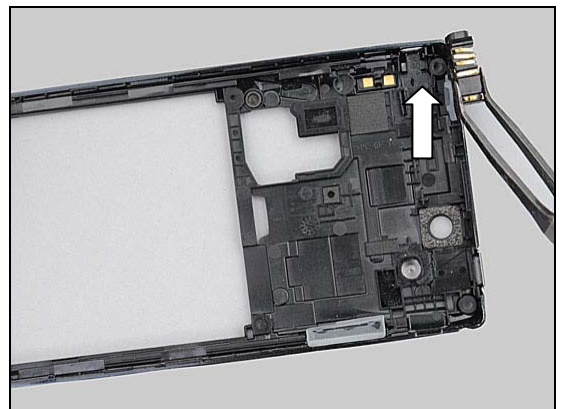
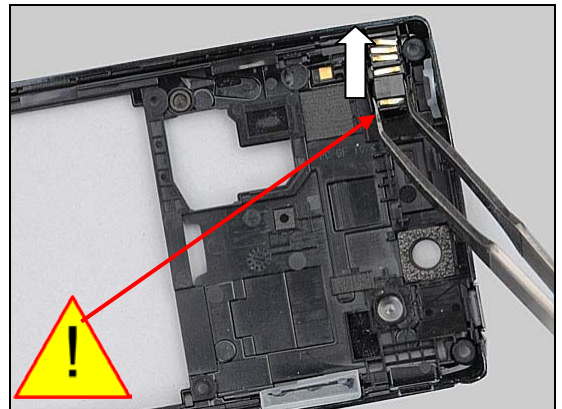
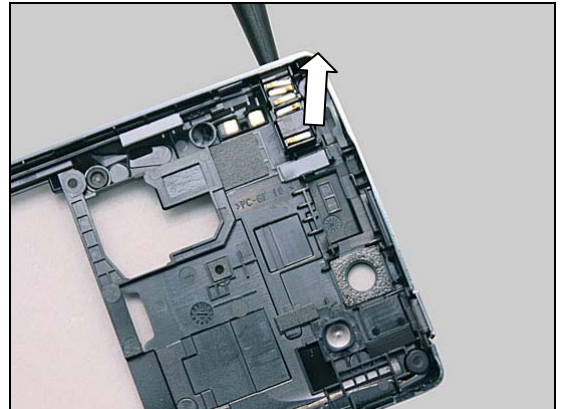
Push to release the hook by a flex film assembly tool.

Detach the Audio Jack Receptacle 5p by the flex film assembly tool.

The adhesive can be reused, but If the adhesive is damaged, scrap the Cover Rear!

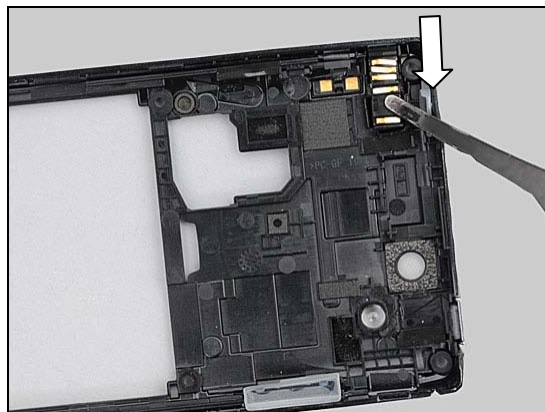
INSTALLATION

Hold the Audio Jack Receptacle 5p and place it on the Cover Rear as shown in picture.



Replacement: Audio Jack Receptacle 5p

Press to snap the hook.





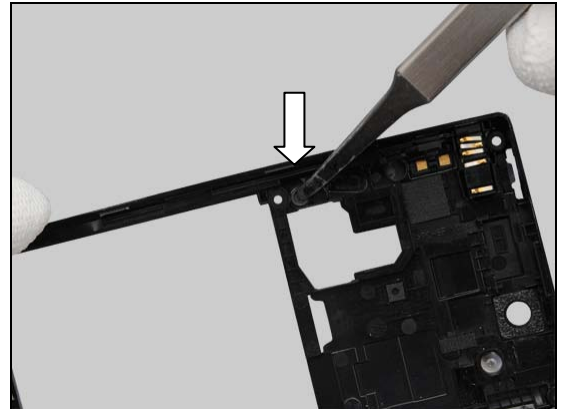
Replacement

4.10 Cap RF

Follow the 3.1 – 3.3 Disassembly instructions!
Carry out the Removal as described below.
Prepare the new Cap RF.
Carry out the Installation as described below.
Follow the 5.6 – 5.8 Reassembly instructions!

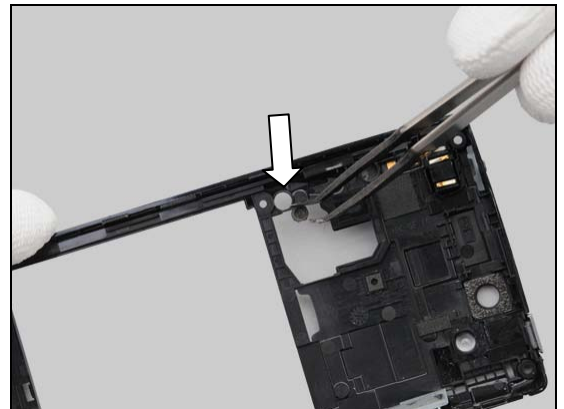
REMOVAL

Push to release the Cap RF by a flex film assembly tool.

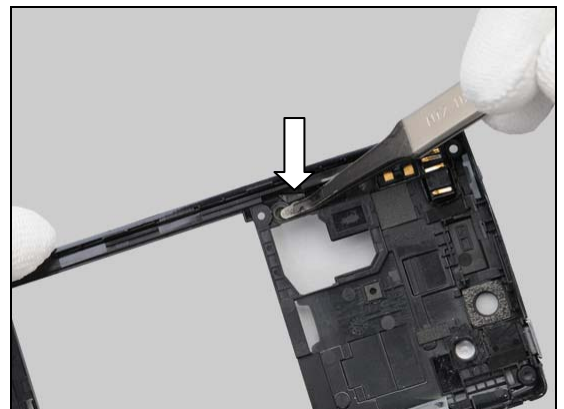


INSTALLATION

Hold the Cap RF and place it on the Cover Rear as shown in picture.



Press the Cap RF into its proper position.





Replacement: Cover Front

4.11 Cover Front

Follow the 3.1 – 3.8 Disassembly instructions!

Follow the 4.12, 4.13, 4.20, 4.25, 4.29, 4.17 Removal instructions!

Prepare the new Cover Front.

Follow the 4.12, 4.13, 4.20, 4.25, 4.29, 4.17 Installation instructions!

Follow the 5.1 – 5.8 Reassembly instructions!





Replacement

4.12 Cover HDMI

Follow the 3.1 Disassembly instructions!

Follow the 4.22 Removal instructions!

Carry out the Removal as described below.

Prepare the new Cover HDMI.

Carry out the Installation as described below.

Follow the 4.22 Installation instructions!

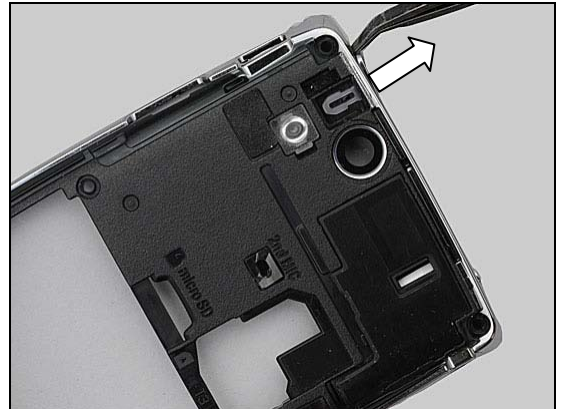
Follow the 5.8 Reassembly instructions!

REMOVAL

Insert a flex film assembly tool and lift to release the Cover HDMI from the Cover Rear.

Lift the Cover HDMI to cross over the guiding pin.

Pull out the Cover HDMI from the Cover Rear by flex film assembly tool.



Replacement: Cover HDMI

INSTALLATION

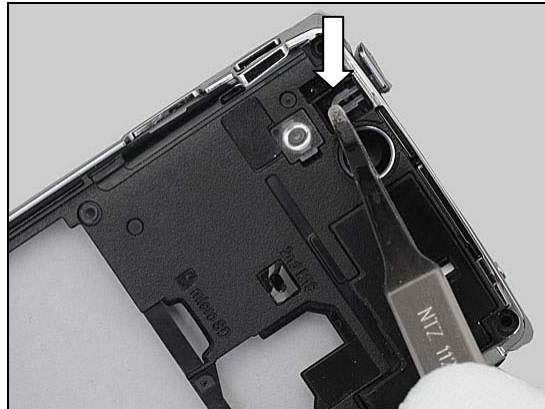
Hold the Cover HDMI and place it on the Cover Rear as shown in picture.



Push the Cover HDMI into the hole on the Cover Rear.



Press the Cover HDMI crossing the guiding pin.



Press the Cover HDMI into its proper position





Replacement

4.13 Display 4.2 TFT

Follow the 3.1 – 3.4 Disassembly instructions!

Carry out the Removal as described below.

Prepare the new Display 4.2 TFT and Cover Front.

Carry out the Installation as described below.

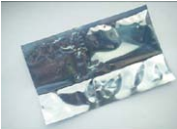
Follow the 5.5 – 5.8 Reassembly instructions!

If tearing in camera view finder after reassembly, please perform Main Display V-Sync Calibration;

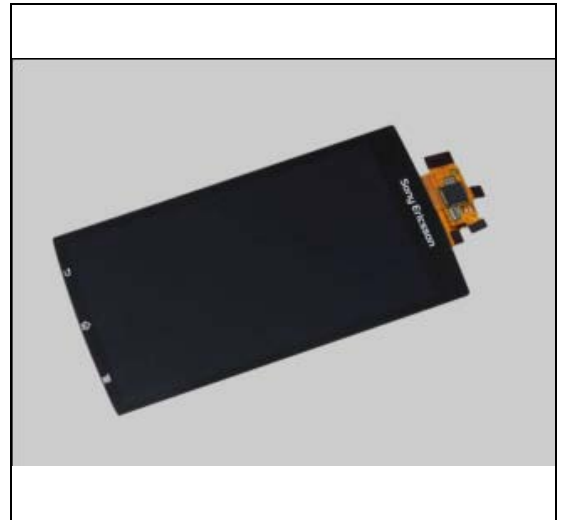
1269-2060 Trouble Shooting Application-mechanical.

Replaced Display's to be returned acc. to local instructions.

Packing Instructions:



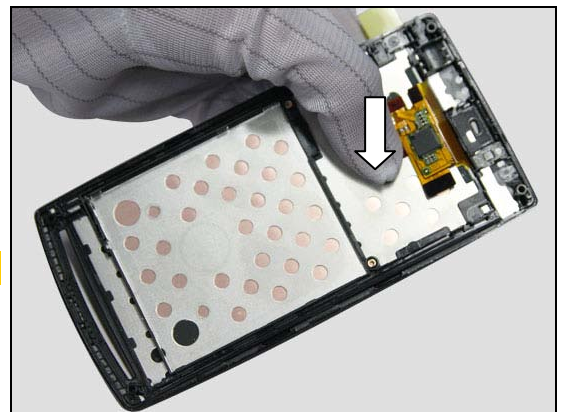
Mark bag with
Part Number &
Work Order



REMOVAL

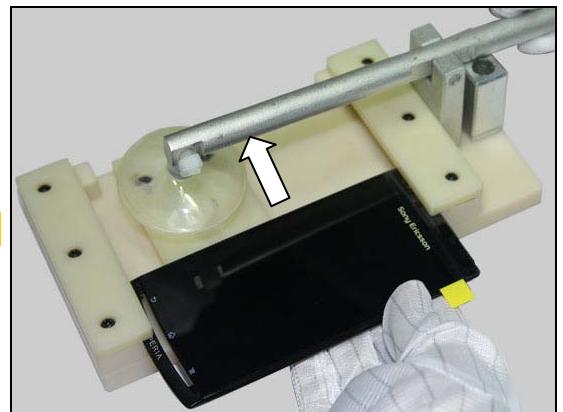
Press and hold the flex part for avoiding the flex pop-up.

Do not press the component!



Turn it over and insert to the press tool.

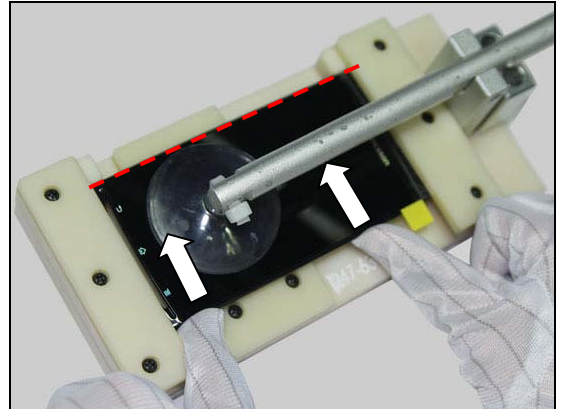
Note the phone's direction!



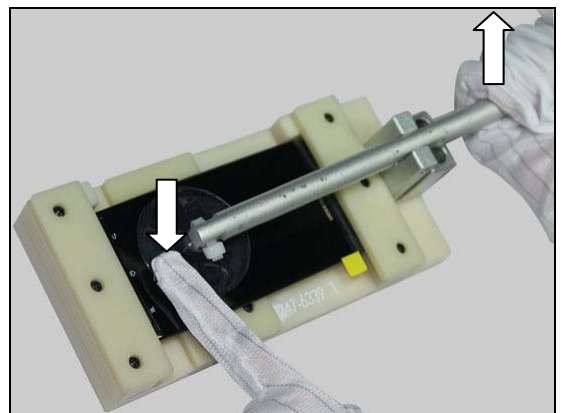
Replacement: Display 4.2 TFT

Push the Display 4.2 TFT in place as shown.

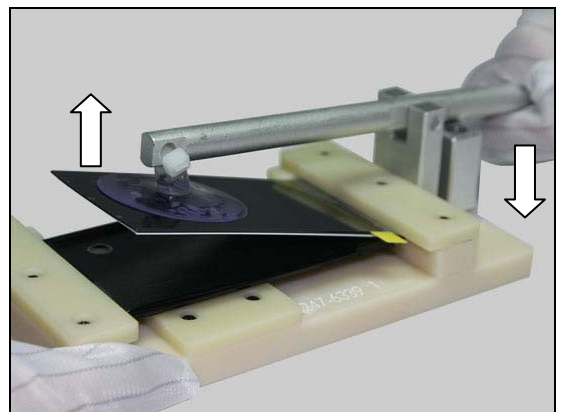
Guiding with the inside border!



Press to attach the tool on Display 4.2 TFT as shown.

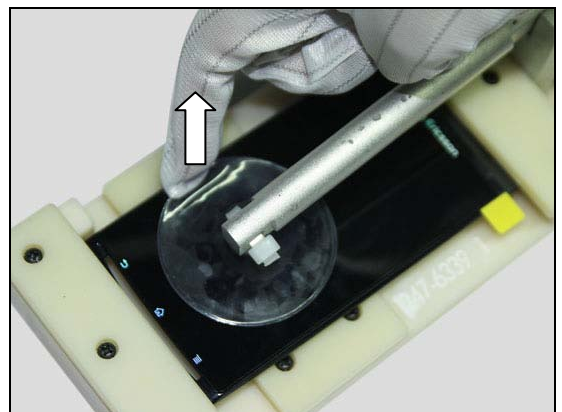


Push down the tool, at the same time, detaches the Display 4.2 TFT as shown.



Pull to release the locker.

Keep the Display 4.2 TFT open!

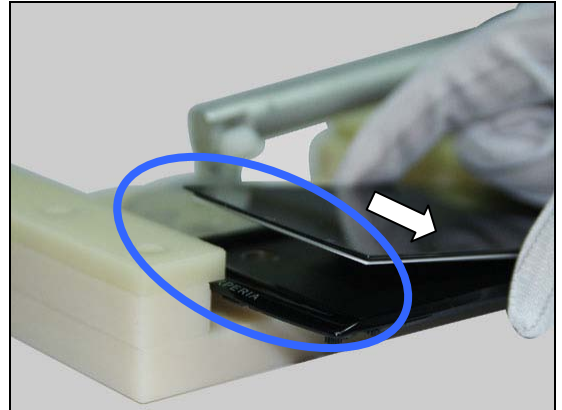




Replacement: Display 4.2 TFT

Lift to remove the tool.

Keep the Display 4.2 TFT open!



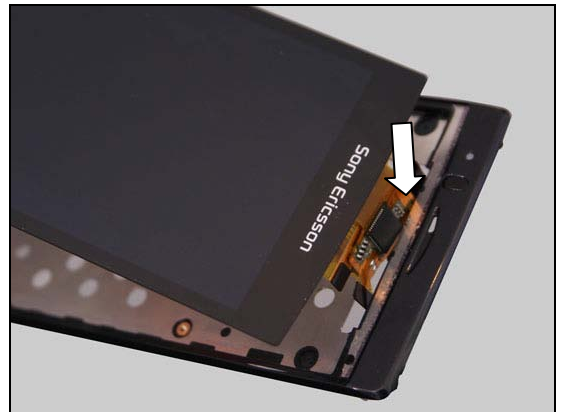
Separate the Display 4.2 TFT and lift up gently.

The Cover Front is scraped! Not to be reused!



INSTALLATION

Insert the new Display 4.2 TFT into the new Cover Front.



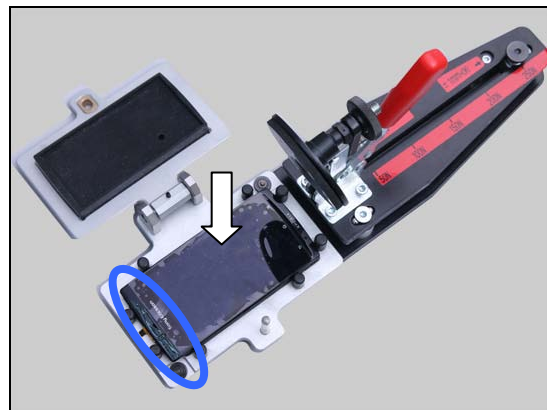
Install the Pressure Fixture onto the Pressure Tool and adjust the pressure to 250 N.



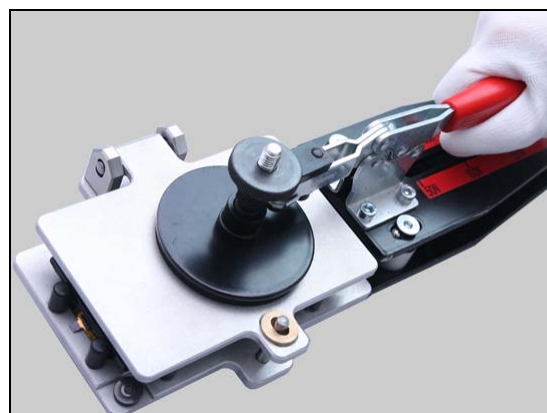
Replacement: Display 4.2 TFT

Place the phone onto the Pressure Fixture.

***Pull out and hold the flex as shown!
Protect the Touch Panel by MComp Sheet Protection
LCD!***



Close the Pressure Fixture and using the Pressure Tool to press the Main Window for 20-25 seconds.



***Make sure the Display 4.2 TFT is well connected with
the Cover Front!***





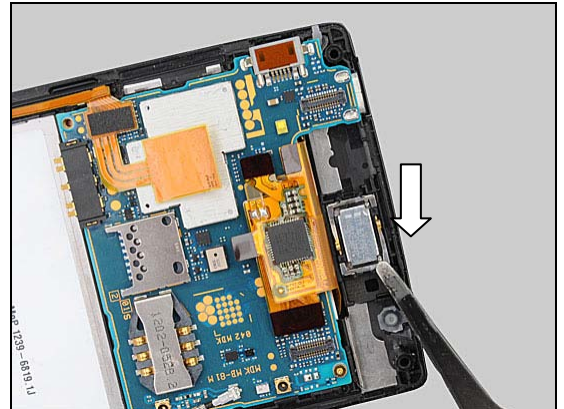
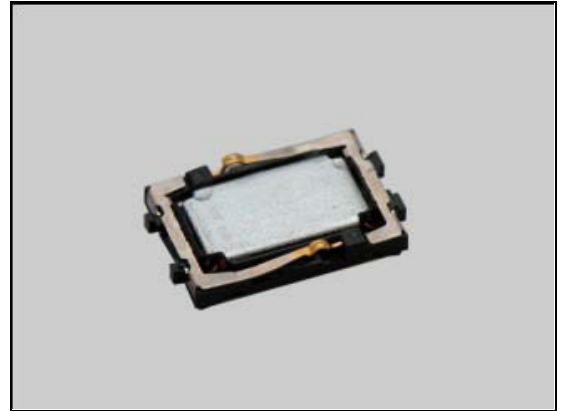
Replacement

4.14 Ear Speaker

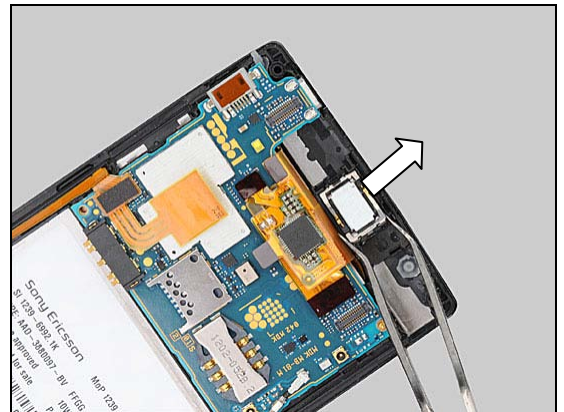
Follow the 3.1 – 3.5 Disassembly instructions!
Carry out the Removal as described below.
Prepare the new Ear Speaker.
Carry out the Installation as described below.
Follow the 5.4 – 5.8 Reassembly instructions!

REMOVAL

Insert a flex film assembly tool underneath and lift up to detach the Ear Speaker.

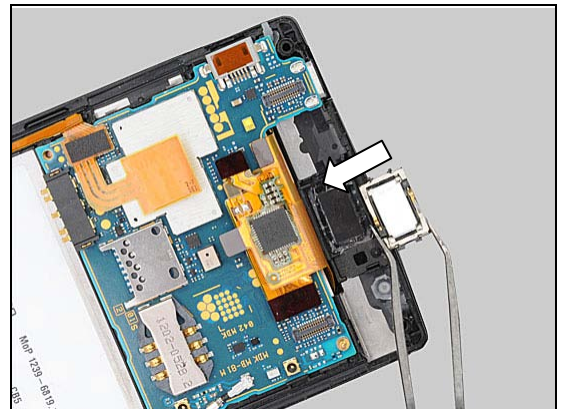


Remove the Ear Speaker.



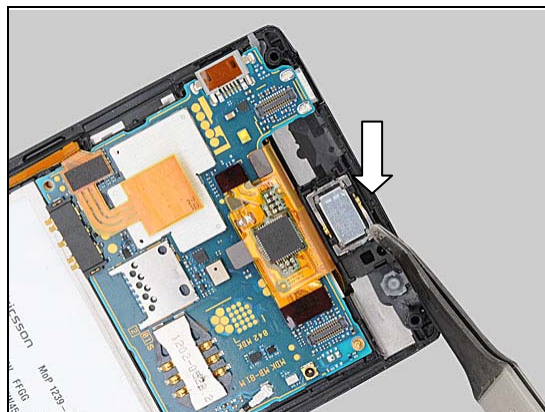
INSTALLATION

Hold the Ear Speaker and place it on the Cover Front as shown in picture.



Replacement: Ear Speaker

Press along the surface the make the Ear Speaker securely attached.



Replacement

4.15 Foil Adhesive Sub PBA

Follow the 3.1 – 3.3, 3.6 – 3.7 Disassembly instructions!

Follow the 4.30 Removal instructions!

Carry out the Removal as described below.

Prepare the new Foil Adhesive Sub PBA.

Carry out the Installation as described below.

Follow the 4.30 Installation instructions!

Follow the 5.2 – 5.3, 5.6– 5.8 Reassembly instructions!

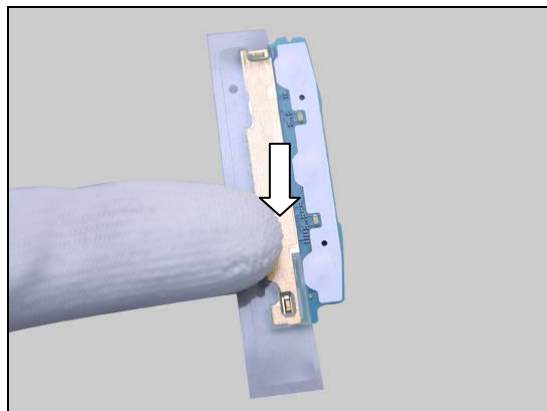
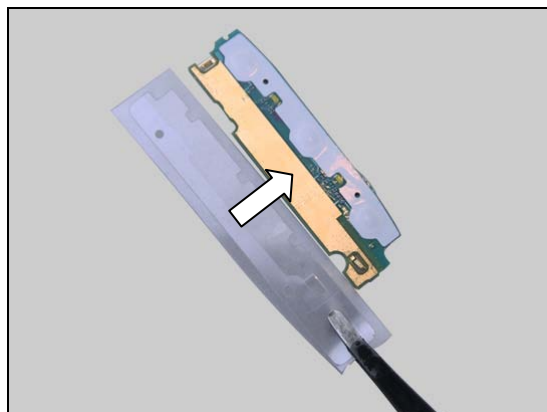
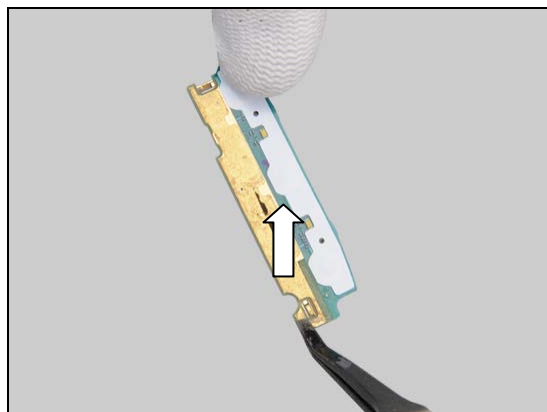
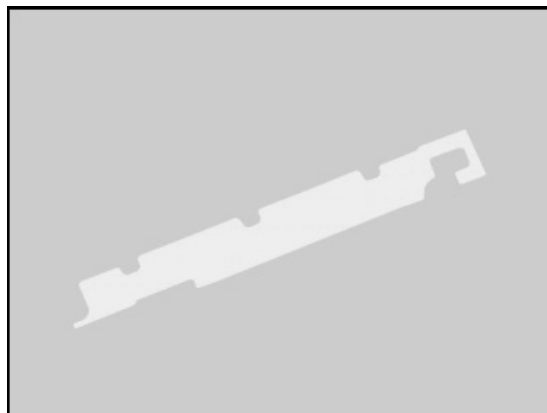
REMOVAL

Remove the Foil Adhesive Sub PBA from the Sub PBA.

INSTALLATION

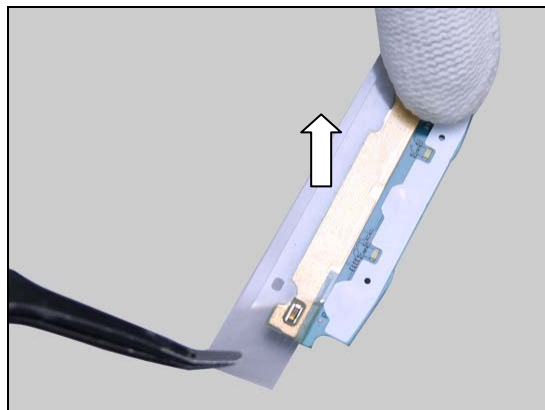
Hold the Foil Adhesive Sub PBA and place it on the Sub PBA as shown in picture.

Press along the surface the make the Foil Adhesive Sub PBA securely attached.



Replacement: Foil Adhesive Sub PBA

Remove the protection film.





Replacement

4.16 Input Switch Push

Follow the 3.1 – 3.3, 3.6 – 3.7 Disassembly instructions!

Carry out the Removal as described below:

Follow the 4.30 Installation instructions!

Prepare the new Input Switch Push.

Carry out the Installation as described below.

Follow the 4.16 Installation instructions!

Follow the 4.30 Removal instructions!

Follow the 5.2 – 5.3, 5.6– 5.8 Reassembly instructions!

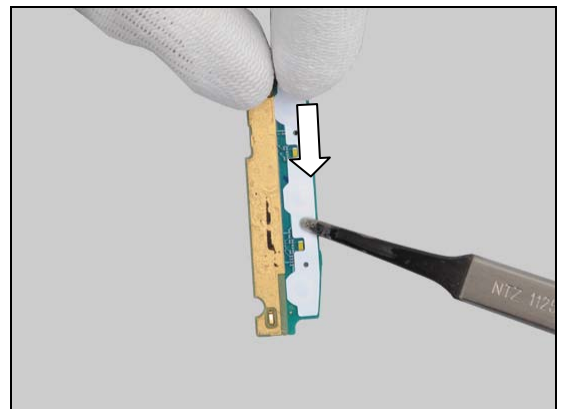
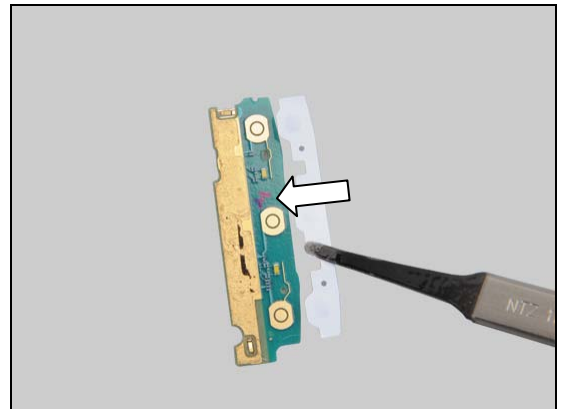
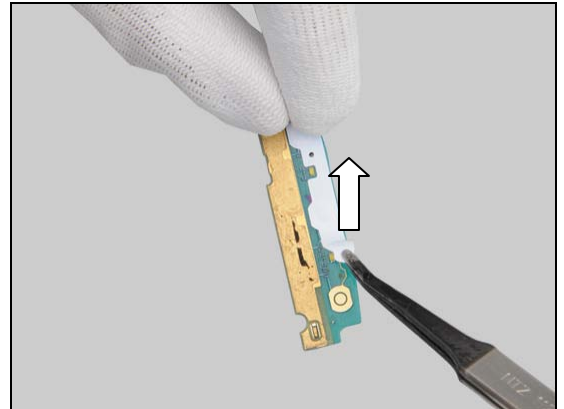
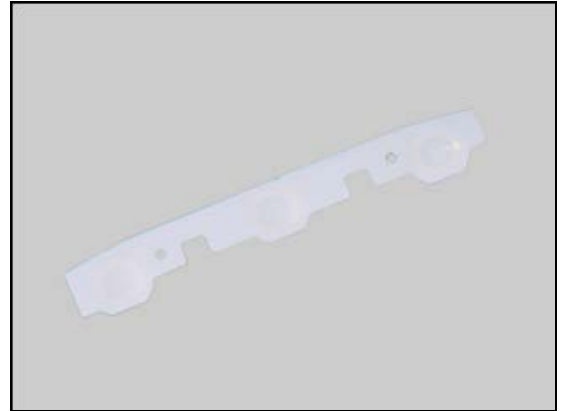
REMOVAL

Detach to remove the Input Switch Push from the Sub PBA.

INSTALLATION

Hold the Input Switch Push and place it on the Sub PBA as shown in picture.

Press along the surface the make the Input Switch Push securely attached.





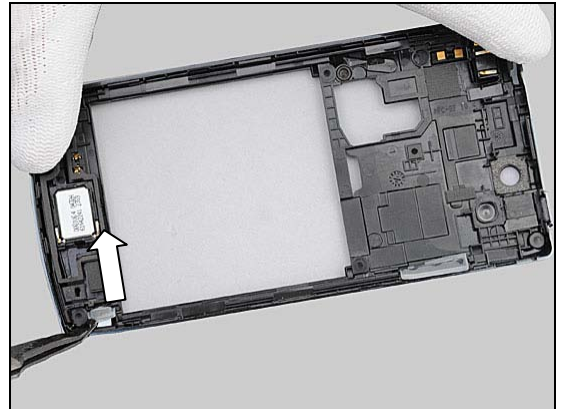
Replacement

4.17 Key Camera

Follow the 3.1– 3.3 Disassembly instructions!
Carry out the Removal as described below.
Prepare the new Key Camera.
Carry out the Installation as described below.
Follow the 5.6 – 5.8 Reassembly instructions!

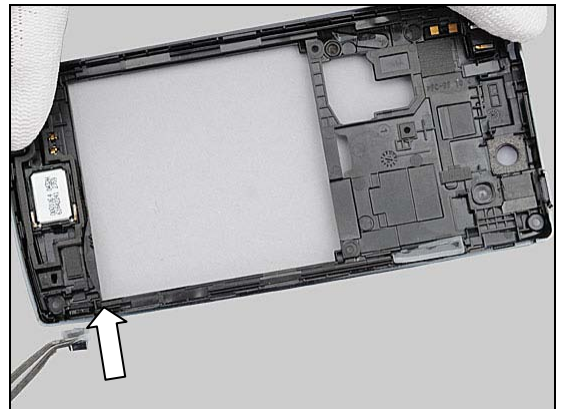
REMOVAL

Lift to remove the Key Camera from the Cover Rear.

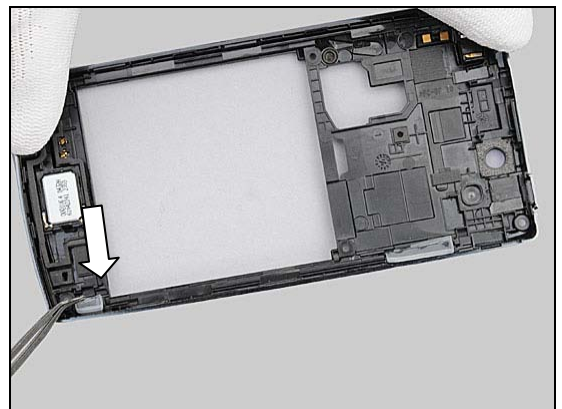


INSTALLATION

Place the Key Camera with proper direction into the slot.



Press the Key Camera into its proper position.





Replacement

4.18 Key Main

Follow the 3.1 – 3.3 Disassembly instructions!
Carry out the Removal as described below.
Follow the 4.30 Removal instructions!
Follow the 4.16 Removal instructions!
Prepare the new Key Main.
Carry out the Installation as described below.
Follow the 4.16 Installation instructions!
Follow the 4.30 Installation instructions!
Follow the 5.6 – 5.8 Reassembly instructions!

REMOVAL

Lift to remove the Key Main.



INSTALLATION

Place the Key Main with proper direction into the slot.



Press the Key Main into its proper position.



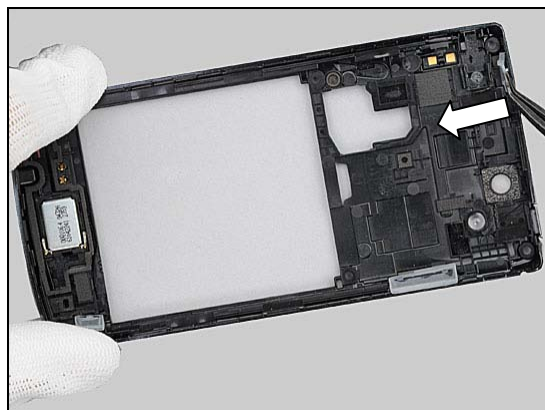
Replacement

4.19 Key On/Off

Follow the 3.1 – 3.3 Disassembly instructions!
Carry out the Removal as described below.
 Prepare the new Key On/Off.
 Carry out the Installation as described below.
Follow the 5.6 – 5.8 Reassembly instructions!

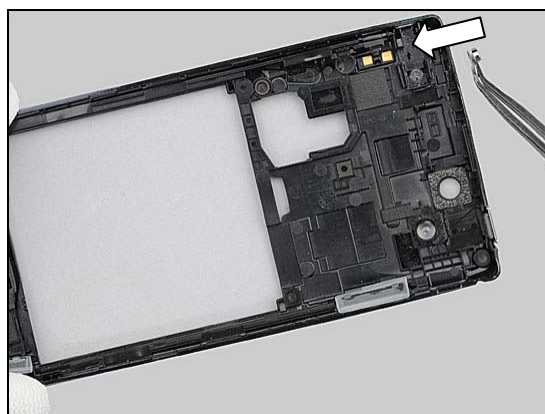
REMOVAL

Lift to remove the Key On/Off from the Cover Rear.



INSTALLATION

Place the Key On/Off with proper direction into the slot.



Press the Key On/Off into its proper position.





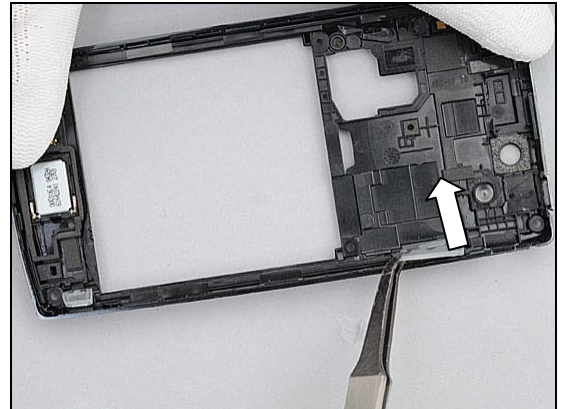
Replacement

4.20 Key Volume

Follow the 3.1 – 3.3 Disassembly instructions!
Carry out the Removal as described below.
Prepare the Key Volume.
Carry out the Installation as described below.
Follow the 5.6 – 5.8 Reassembly instructions!

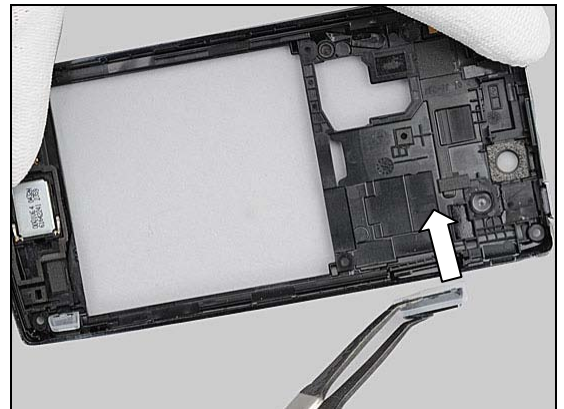
REMOVAL

Lift to remove the Key Volume from the Cover Rear.

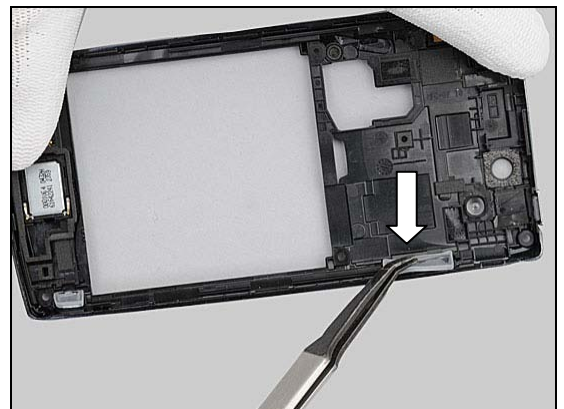


INSTALLATION

Place the Key Volume with proper direction into the slot.



Press the Key Volume into its socket.





Replacement

4.21 Label Core Unit

Follow the 3.1 – 3.2 Disassembly instructions!
Carry out the Removal as described below.
Prepare the Label Core Unit.
Carry out the Installation as described below.
Follow the 5.7 – 5.8 Reassembly instructions!

REMOVAL

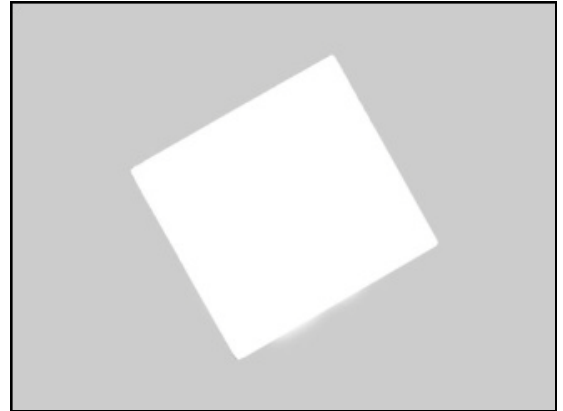
Read the old Label Core Unit and write the information into the 'LabelMake' program.

Carefully remove the Label by using a pair of tweezers.

INSTALLATION

Check that the proper label format is loaded in the Zebra printer and write a new Label by using the 'LabelMake' software.

One label only is allowed!



Replacement: Label Core Unit

Press along the surface to make Label securely attached.



Replacement

4.22 MComp Sheet Hinge HDMI

Follow the 3.1 – 3.2 Disassembly instructions!
Carry out the Removal as described below.
 Prepare the MComp Sheet Hinge HDMI.
 Carry out the Installation as described below.
Follow the 5.7 – 5.Y8Reassembly instructions!

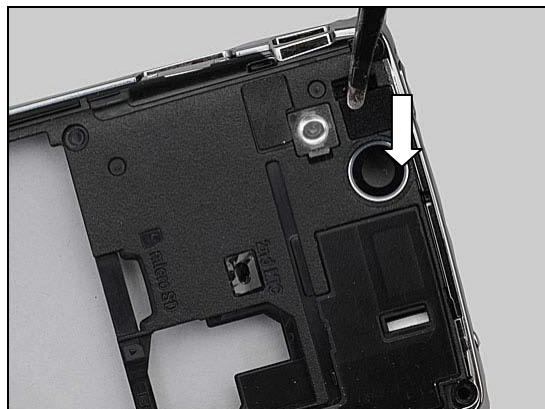
REMOVAL

Insert the Tweezers into the side of the MComp Sheet Hinge HDMI to open the corner.

Detach the MComp Sheet Hinge HDMI from the corner by the flex film assembly tool.

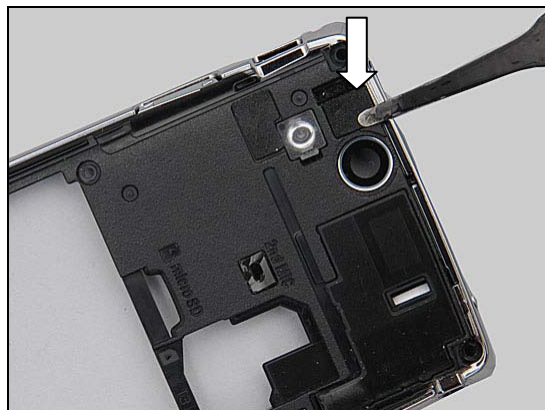
INSTALLATION

Attach the MComp Sheet Hinge HDMI on the Cover Rear.



Replacement: MComp Sheet Hinge HDMI

Press to make it properly attached.



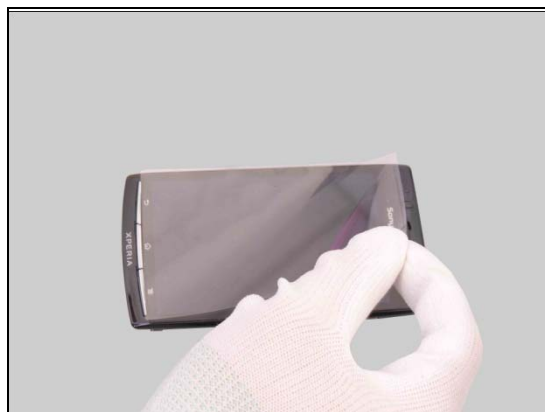
Replacement

4.23 MComp Sheet Protection LCD

Carry out the Removal as described below.
 Prepare the MComp Sheet Protection LCD.
 Carry out the Installation as described below.

REMOVAL

Detach the MComp Sheet Protection LCD.



INSTALLATION

Attach the MComp Sheet Protection LCD.



Press to make it properly attached.



Replacement

4.24 MComp Sheet Sub PBA

Follow the 3.1 – 3.3 Disassembly instructions!
Carry out the Removal as described below.
 Prepare the MComp Sheet Sub PBA.
 Carry out the Installation as described below.
Follow the 5.6– 5.8 Reassembly instructions!

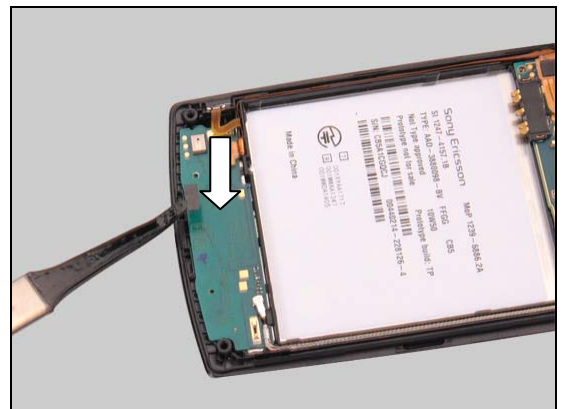
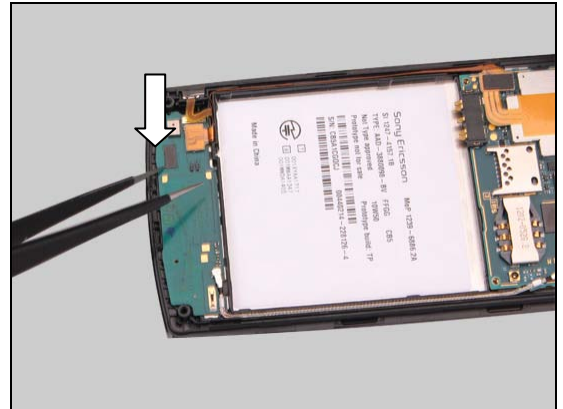
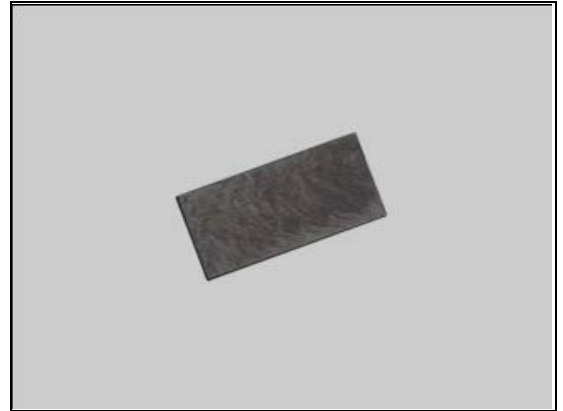
REMOVAL

Insert the Tweezers into the side of the MComp Sheet Sub PBA to open the corner.

Detach the MComp Sheet Sub PBA from the corner by the flex film assembly tool.

INSTALLATION

Attach the MComp Sheet Sub PBA on the Cover Rear.



Replacement: MComp Sheet Sub PBA

Press to make it properly attached.





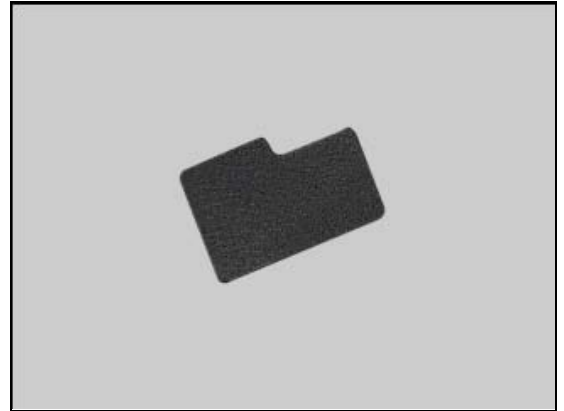
Replacement

4.25 MComp Sheet TP

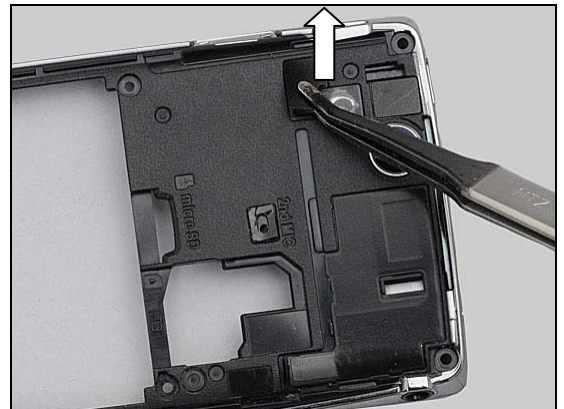
Follow the 3.1 – 3.2 Disassembly instructions!
Carry out the Removal as described below.
Prepare the MComp Sheet TP.
Carry out the Installation as described below.
Follow the 5.7 – 5.8 Reassembly instructions!

REMOVAL

Insert the Tweezers into the side of the MComp Sheet TP to open the corner.

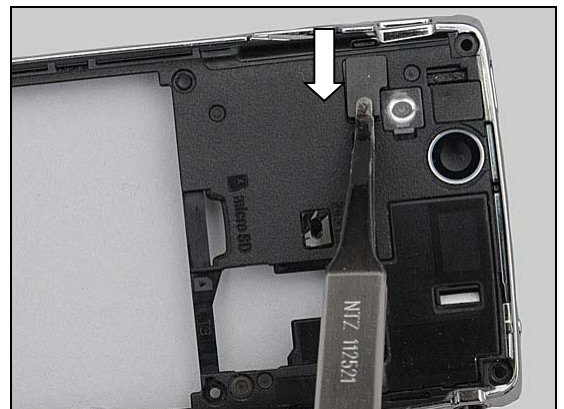


Detach the MComp Sheet TP from the corner by the flex film assembly tool.



INSTALLATION

Attach the MComp Sheet TP on the Cover Rear.



Replacement: MComp Sheet TP

Press to make it properly attached.





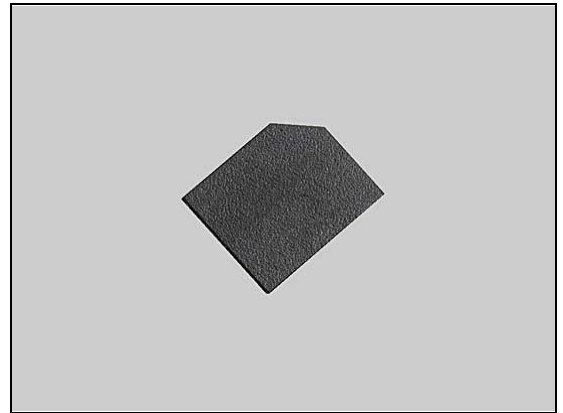
Replacement

4.26 Mcomp Sheet TP SIM

Follow the 3.1 – 3.2 Disassembly instructions!
Carry out the Removal as described below.
Prepare the Mcomp Sheet TP SIM.
Carry out the Installation as described below.
Follow the 5.7 – 5.8 Reassembly instructions!

REMOVAL

Detach the Mcomp Sheet TP SIM from the corner by the flex film assembly tool.

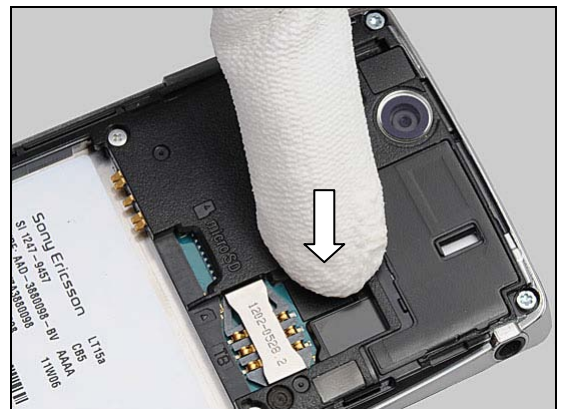


INSTALLATION

Attach the Mcomp Sheet TP SIM on the Cover Rear.



Press to make it properly attached.





Replacement

4.27 Net Receiver

Follow the 3.1 – 3.5 Disassembly instructions!

Follow the 4.14 Removal instructions!

Carry out the Removal as described below.

Prepare the new Net Receiver.

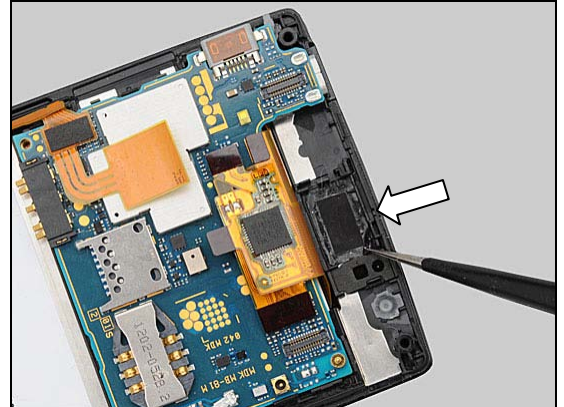
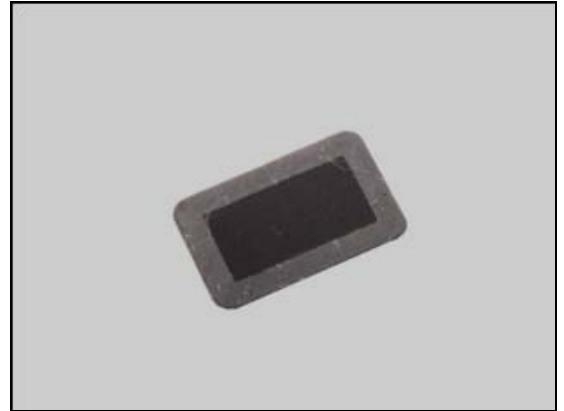
Carry out the Installation as described below.

Follow the 4.14 Installation instructions!

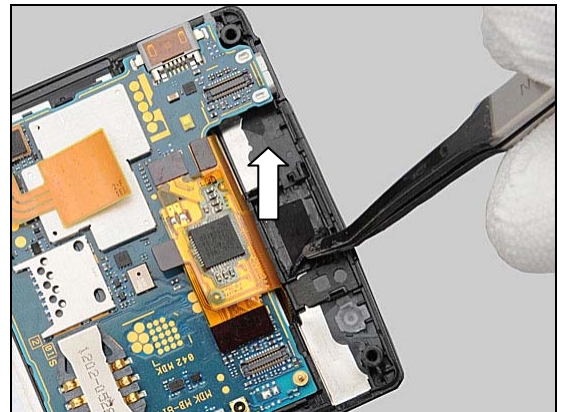
Follow the 5.4 – 5.8 Reassembly instructions!

REMOVAL

Insert the Tweezers into the side of the Net Receiver to open the corner.

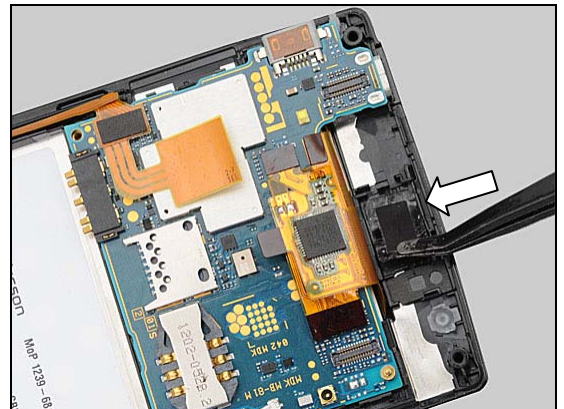


Detach the Net Receiver from the corner by the flex film assembly tool.



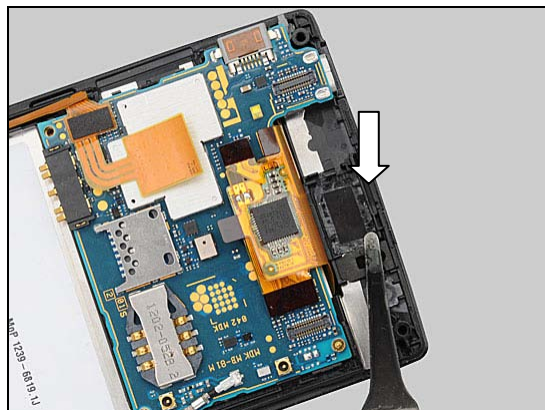
INSTALLATION

Attach the Net Receiver on the Cover Rear.



Replacement: Net Receiver

Press to make it properly attached.



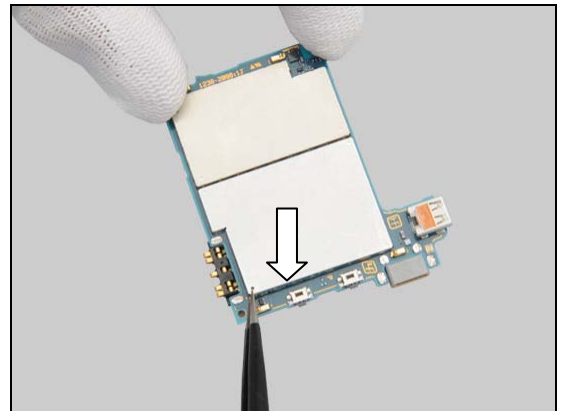
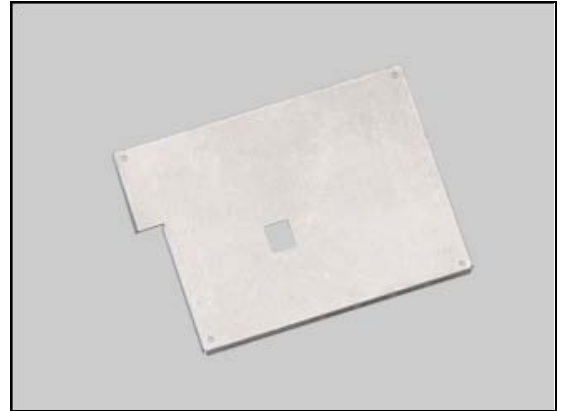
Replacement

4.28 Shield Can Lid BB-A

Follow the 3.1 – 3.8 Disassembly instructions!
Carry out the Removal as described below.
 Prepare the new Shield Can Lid BB-A.
Carry out the Installation as described below.
Follow the 5.1 – 5.8 Reassembly instructions!

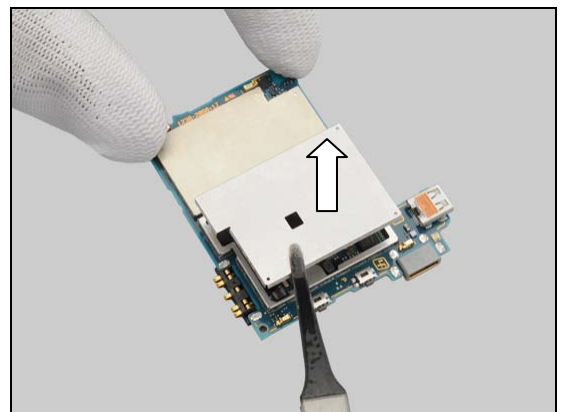
REMOVAL

Insert the tweezers into the corners of the Shield Can Lid BB-A and pull upwards to release it.

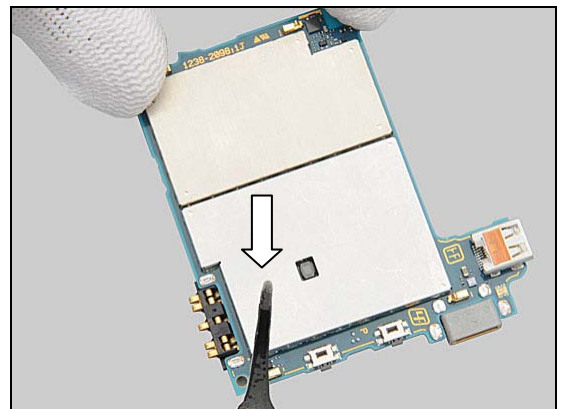


INSTALLATION

Put a new Shield Can Lid BB-A in place.



Press gently until it is securely attached.



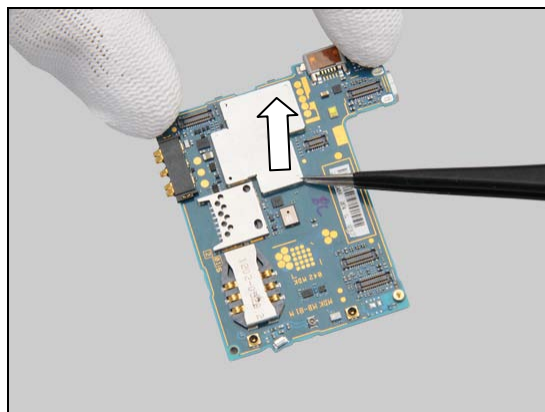
Replacement

4.29 Shield Can Lid BB-B

Follow the 3.1 – 3.8 Disassembly instructions!
Carry out the Removal as described below.
 Prepare the new Shield Can Lid BB-B.
 Carry out the Installation as described below.
Follow the 5.1 – 5.8 Reassembly instructions!

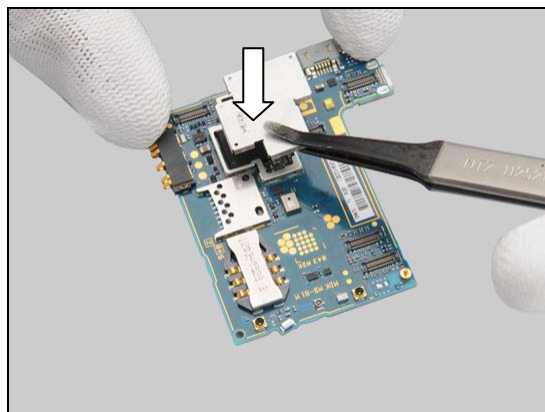
REMOVAL

Insert the tweezers into the corners of the Shield Can Lid BB-B and pull upwards to release it.

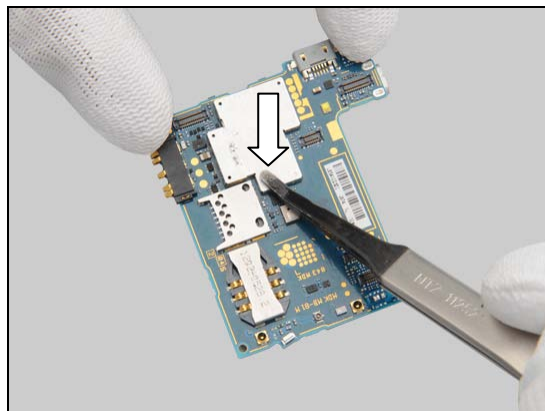


INSTALLATION

Put a new Shield Can Lid BB-B in place.



Press gently until it is securely attached.





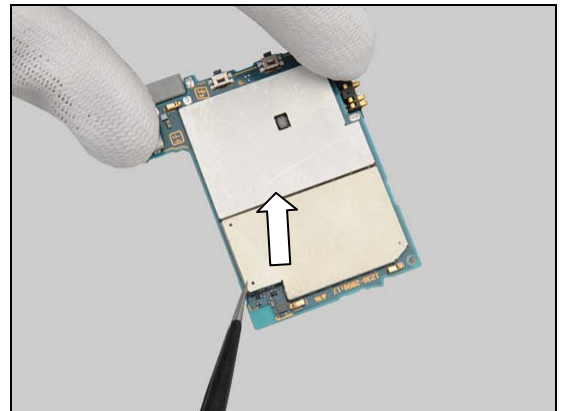
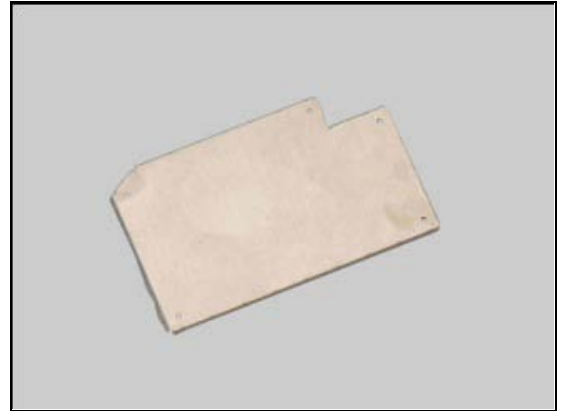
Replacement

4.30 Shield Can Lid RF

Follow the 3.1 – 3.8 Disassembly instructions!
Carry out the Removal as described below.
Prepare the new Shield Can Lid RF.
Carry out the Installation as described below.
Follow the 5.1 – 5.8 Reassembly instructions!

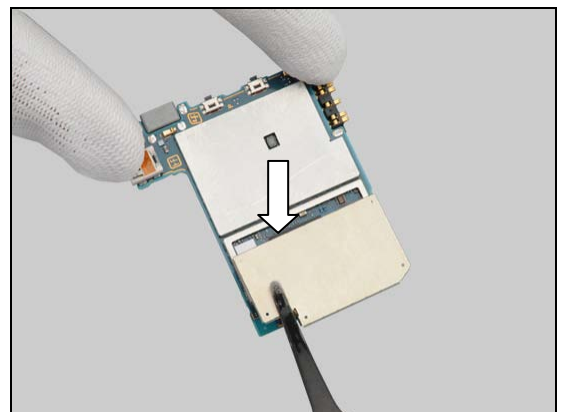
REMOVAL

Insert the tweezers into the corners of the Shield Can Lid RF and pull upwards to release it.

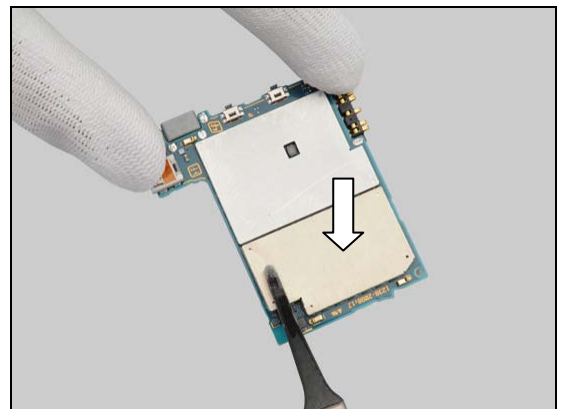


INSTALLATION

Put a new Shield Can Lid RF in place.



Press gently until it is securely attached.





Replacement

4.31 Sub PBA

Follow the 3.1 – 3.3, 3.6 – 3.7 Disassembly instructions!

Carry out the Removal as described below.

Prepare the new Sub PBA.

Carry out the Installation as described below.

Follow the 4.15 and 4.24 Installation instructions!

Follow the 5.2 – 5.3, 5.6– 5.8 Reassembly instructions!

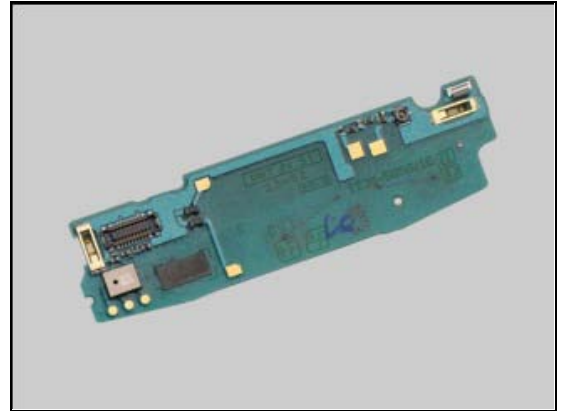
REMOVAL

Insert a guitar pick underneath the Sub PBA with three times.

Do not directly slide the guitar pick!

Lift up to detach the Sub PBA.

Remove the Sub PBA.





Replacement: Sub PBA

INSTALLATION

Place the Sub PBA onto the Cover Front as shown in picture.



Press along the surface the make the Sub PBA securely attached.





Replacement: Board Swap

4.32 Board Swap

4.32.1 Board Swap- Replacement

Follow the 3.1 – 3.5, 3.6 BtB on PBA, 3.7 PBA RF connector and 3.8 Disassembly instructions.

Replace the Swap Board.

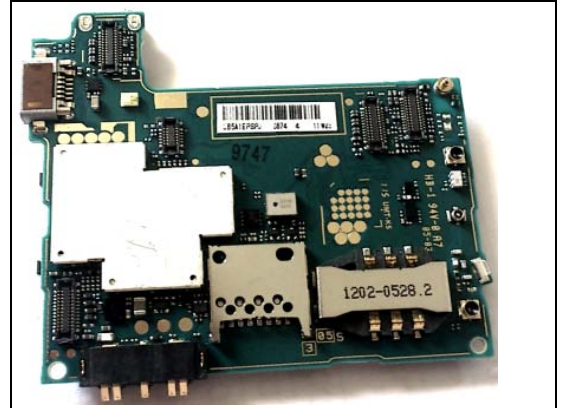
Reuse the Camera.

Follow the 5.1 - 5.6 Installation instructions.

Add Mcomp Sheet TP SIM 1246-8044



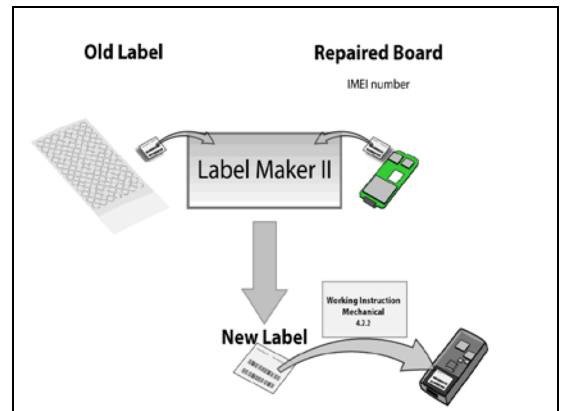
Startup the unit to initialize settings, before performing Customize Phone in Emma



4.32.2 Board Swap – Change Label

CHANGE LABEL

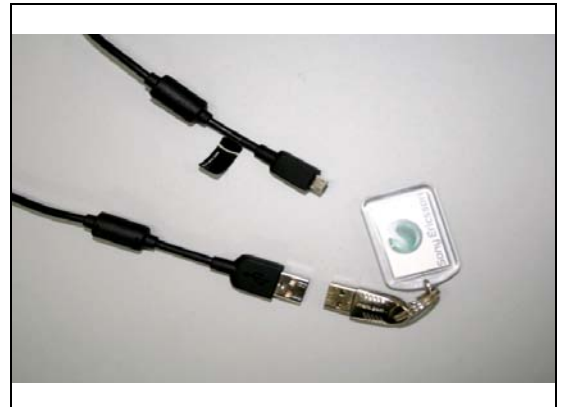
Follow the instructions in the Generic Repair Manual – Build swap for change of label.



4.32.3 Board Swap – Customize of Software

CUSTOMIZE OF SOFTWARE

Follow the instructions in the Generic Repair Manual – Build swap for customization of the software.





5 Reassembly

The reassembly is done in the following order:

1. Cover Front & Display 4.2 TFT
2. Main PBA
3. Cable RF
4. Key Flex PBA
5. RCV Flex PBA Assy
6. Camera
7. Cover Rear
8. Battery
9. Cover Battery

5.1 Main PBA

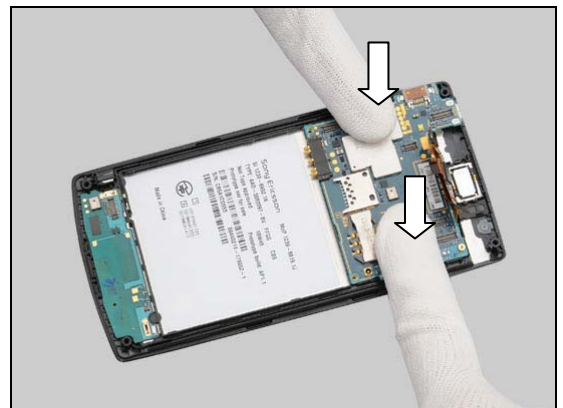
Place the Main PBA with the unit.



Place the Main PBA into the socket.

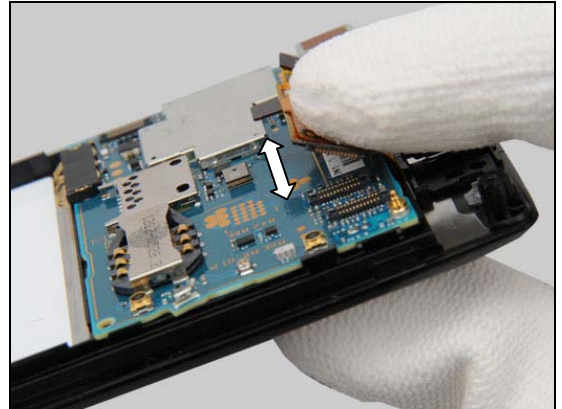


Press to snap the two hooks.

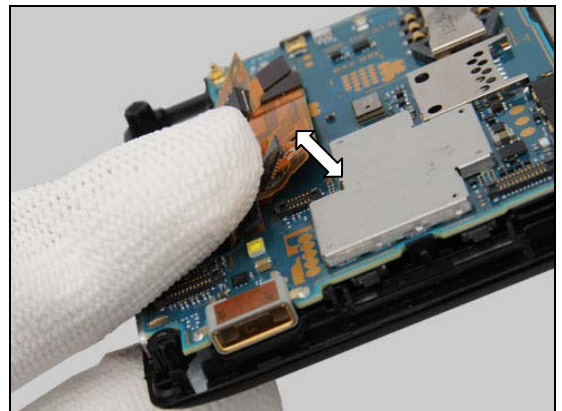


Reassembly

Snap the BtB connector with fingers.

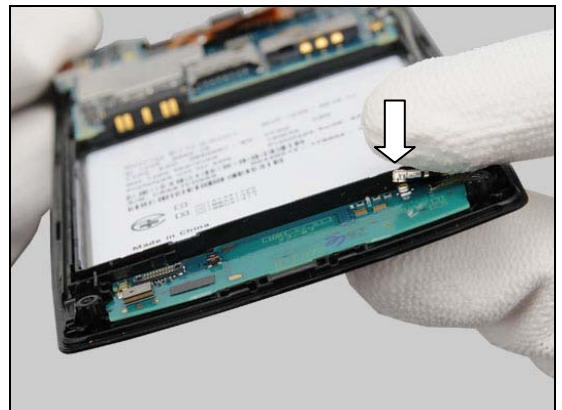


Snap the BtB connector with fingers.



5.2 Cable RF

Connect both side of the Cable RF with fingers.



Push the Cable RF into its socket with a flex film assembly tool.



Reassembly

Press along the Cable RF into its socket with a flex film assembly tool.



5.3 Key Flex PBA

Insert the Key Flex PBA into the groove, and press along the slot to assure its position.



Snap the BtB connector with fingers.



Press the Key Flex PBA to assure its attachment on Main PBA.





Reassembly

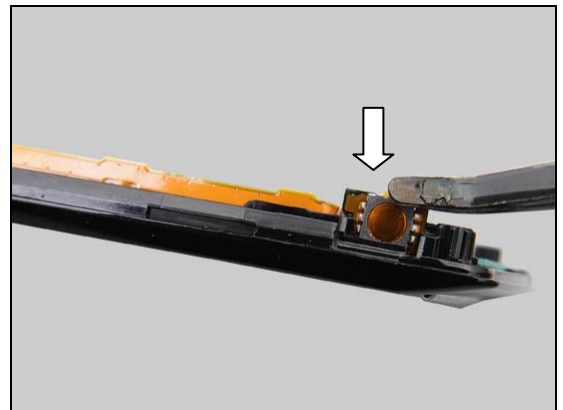
Snap the BtB connector with fingers.



Insert the key dome into its socket.

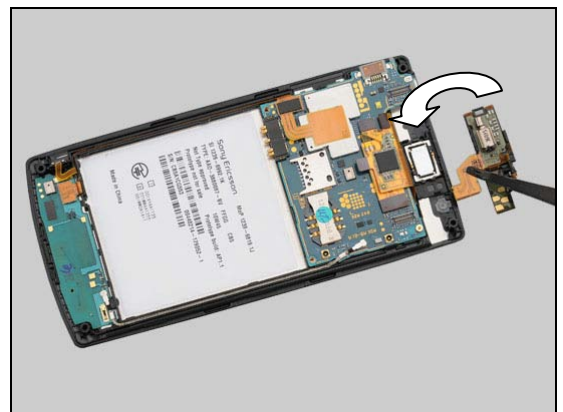


Press to assure its position.



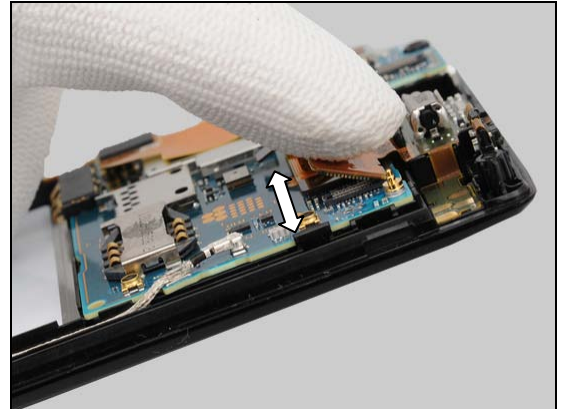
5.4 RCV Flex PBA Assy

Put the RCV Flex PBA Assy in place.



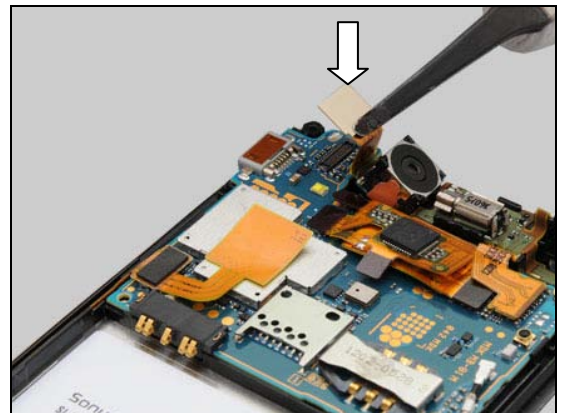
Reassembly

Snap the BtB connector with fingers.

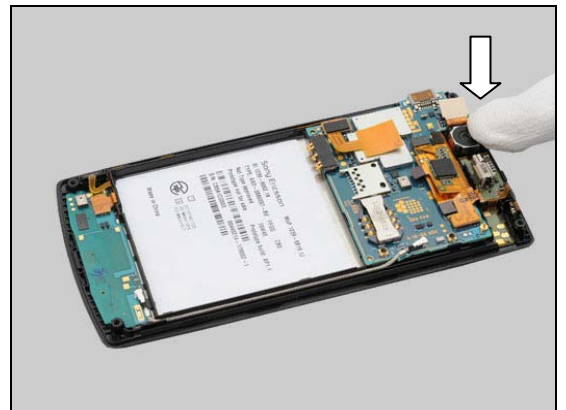


5.5 Camera

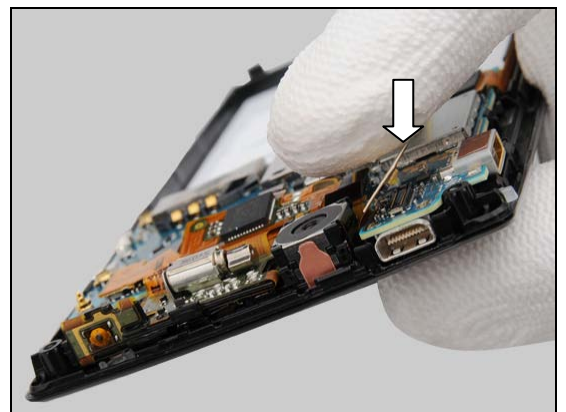
Put the Camera into socket with 30 degree tilt.



Press to fix the Camera's position.



Snap the BtB connector with fingers.





Reassembly

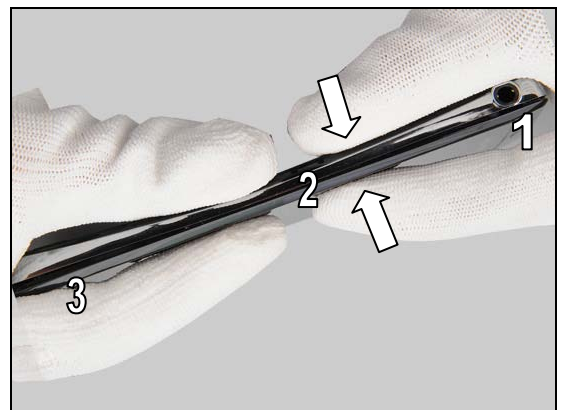
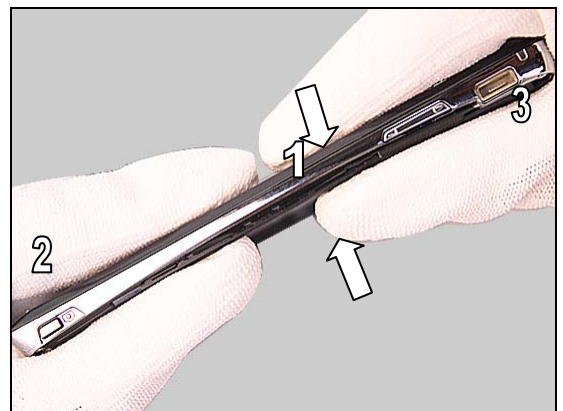
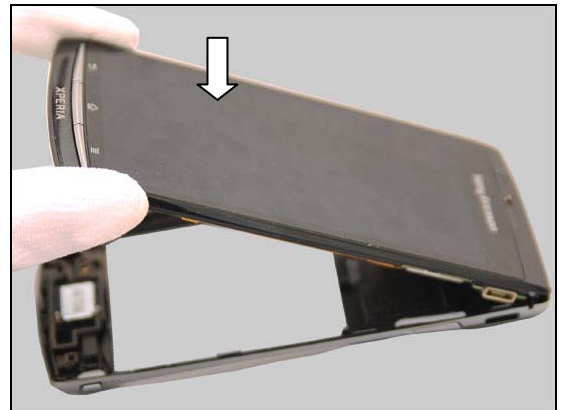
5.6 Cover Rear

Put the Cover Rear in Place.

Press to snap the hooks from middle (1) to bottom (2), then to top (3).

Press the other side with order as shown.

Press the top to snap the hook.



Reassembly

Press the bottom to snap the hook.



Apply 25 ± 2 Ncm torque when tightening the four Screw
Len:4.5 Diam:1.7 with T6.

Take new screws!



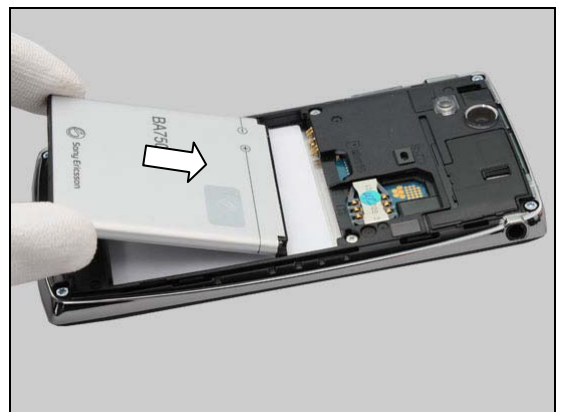
Apply 15 ± 2 Ncm torque when tightening the two Screw
Len:3.0 Diam:1.4 M with Bits (JCIS No 0).

Take new screws!



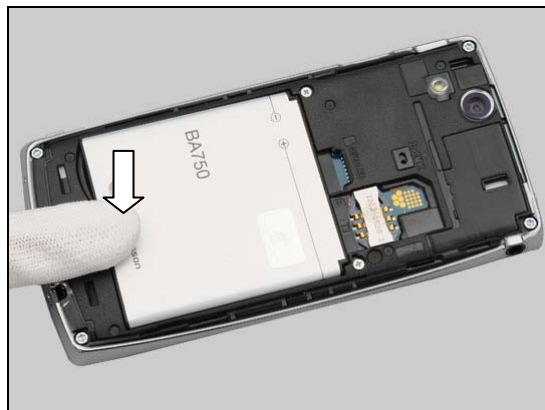
5.7 Battery

Put the Battery in place.



Reassembly

Press the Battery into its cavity.



5.8 Cover Battery

Put the Battery Cover in place.



Press to snap it.





6 Country of Origin Barcodes for Brazil/VIVO Labels

Below is a link to a list of countries of origin. If you are printing a Brazil or VIVO label, scan the barcode corresponding to the correct country of origin for the “Fabricado” field.



7 Revision History

Rev.	Date	Changes / Comments
1	2011-09-01	Initial release
2	2011-09-27	Update page19 about audio jack adhesive comments.
3	2011-10-18	Update Chapter 4.13 for calibration
4	2012-08-23	New Main display V-sync calibration added to 4.13